

Greater Boston, Cape Cod and the Islands

# Builder+ Architect®

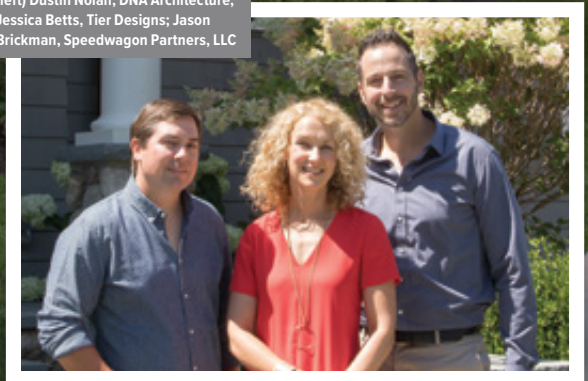
A BUSINESS MANAGEMENT MAGAZINE FOR THE BUILDING INDUSTRY

## Speedwagon Partners, LLC

House of the  
Month, Lexington,  
Massachusetts



(left) Dustin Nolan, DNA Architecture;  
Jessica Betts, Tier Designs; Jason  
Brickman, Speedwagon Partners, LLC



# Speedwagon Partners, LLC

Exquisite and  
finely appointed  
custom homes



Cars frequently come to a dead stop in front of this corner lot home in Lexington Center, in an effort to catch a better glimpse of this timeless masterpiece. The original home, a 1964 garrison colonial, offered little curb appeal. In contrast, this shingle-style rebuild provides the onlooker with sharp roof lines, ornate architectural windows and a dramatic chimney replete with copper cap. Lush landscaping completes the curb appeal.

**M**EASURED IN YEARS, one might presume Speedwagon Partners, LLC, an industry novice. Yet this Bedford-based residential build company consistently keeps rank with the most esteemed and prestigious build firms. Despite its youth, Speedwagon Partners has amassed a sizable portfolio of exquisite and finely appointed custom homes in Northeastern Massachusetts. Offering a full array of services to include renovations, additions, specialty gym and theater design, the company's primary focus is the construction of stately spec houses and finely crafted custom homes. Responding to his company's rapid success, Principal Jason Brickman offered this modest statement, "We've been able to build houses that people seem to like." Indeed.



PHOTOGRAPHY: DAMIANOS PHOTOGRAPHY



PHOTOGRAPHY: FRED LIGHT

The open family room is spacious, drawing one's eye immediately to the Calacatta marble surround fireplace, which matches the same surface on the wet bar countertop. The high, coffered ceiling and light marble surface provides the perfect contrast to the walnut floors seen here and throughout the house. The custom built-ins are also constructed of walnut.

The homeowners felt strongly that there be no formal living room but instead, a lounge that would be comfortable while offering all the modern conveniences. Those include a 55-inch television tucked away in the customized built-in that, with the push of a button and the help of its Nexus lift, appear out of nowhere. A custom-made humidifier resides among the built-ins. There is also the requisite ventilation system so that there should be no trace of cigar smoke when not being enjoyed by the homeowner. The fireplace surround is outfitted with a Bianco Rhino leathered marble, which required mitering of the edges. Walnut windows, crown moulding and built-ins adorn every wall. When you require privacy, reach into the wall for the 8' tall, double 42-inch-wide walnut pocket doors. Deal sealed. "This is my favorite room of the house," Jason recalled.

---

*"We fell in love with the house the moment we saw it. Jason Brickman designed and built a masterpiece, with so many lovely and unique details and features. At the same time, it feels so comfortable to be in—it has such a warm and welcoming vibe. We've never seen anything quite like it. It's a privilege to own a home that was built with such attention to detail and high-quality craftsmanship."*

—HOMEOWNER



The kitchen is a game-changer, boasting a 44-inch-wide island sink, plus additional prep sink off to one side. There are Wolf appliances as far as the eye can see: a 48-inch integrated sub-zero refrigerator/freezer, a 60-inch dual-fuel double oven, a steam oven and drawer microwave, under-cabinet paneled refrigerator and freezer drawers, stone countertops and backsplash are Calacatta by Neolith, while the polished nickel fixtures belong to Waterstone. LED lighting throughout brightens the space and makes it appear bigger than it actually is. Custom cabinetry, including leaded glass treatments add a personal touch.



"This master bathroom is one of the nicest we've completed." The vanity mirror is backlit while the custom walnut floating vanities provide under cabinet lighting. Jessica Betts collaborated on tile design. "We created a border around the entire room with a polished nickel Schluter edge, inset with dolomite tile, laid in a chevron pattern." Beautiful double pocket doors lead from the bathroom into the dressing room. Speedwagon's master carpenters (Dennis Doucette and William Legare) crafted beautiful custom cabinetry with walnut inlays. "They don't need much direction; they are typically the ones giving the direction. They can build anything or design any millwork," Brickman challenged. "I'd put them up against any other carpenters in the industry. I believe they're two of the best. We're lucky to have them."



PROJECT: Chatham, MA  
BUILDER: Speedwagon Partners, LLC  
DESIGN: Envisionary Lines, Matthew J. Piekarski  
LANDSCAPE ARCHITECT: Eric Bednarek  
A shingle design house with a pressure-treated cedar roof is nestled in a beautiful location on Cape Cod.







The living room features a see-through fireplace.



Excellence in quality and workmanship by Speedwagon's carpenters make each home an extraordinary one-of-a-kind home.

PHOTOGRAPHY: DAMIANOS PHOTOGRAPHY

Discerning customers routinely choose Speedwagon for its forward design thinking and construction integrity. The company relies exclusively on word-of-mouth marketing—keeping its dance card full. Brickman's team is composed of a small group of industry leaders on whom he relies heavily and trusts implicitly. This distinguished cast includes Dustin Nolan of DNA Architecture, Boston, (whose recognized excellence in shingle style design pairs seamlessly with Speedwagon's build style) and

Interior Designer Jessica Betts of Tier Designs. Together, the three have collaborated on an array of homes, each distinguished in its design but outfitted with the same notable Speedwagon attributes. Every home endowed with Nolan's timeless architectural stylings offers spacious interior rooms. It boasts Speedwagon custom-crafted everything to include built-ins, cabinetry, intricate fireplace surrounds, artful staircases, coffered and/or beamed ceilings and high-end technological amenities.



Kitchen by Crownpoint Cabinetry



PHOTOGRAPHY: DAMIANOS PHOTOGRAPHY

Jessica's peerless design sense is on display throughout every home, seen in the selection of flooring, countertops, tiling, color schemes and the elegant harmonization of every detail.

When discussing his company's achievements, Jason regularly references the team—this emphasis delivered to distinguish the main characters. More often though, he will affectionately reference that core group as “my guys.” They are otherwise known as Charlie Gentile, Tommy Busa, Glen

Sargent, (both GCs), Dennis Doucette and Erika Hueneburg, the office manager who keeps the entire team organized and on point.

“Many of my guys have been with me for 10 years or so,” Jason said. “I couldn't consider myself anymore fortunate for the team and group of clients with whom we've been able to work.” He attributes his continued learning and growth to having “surrounded (him)self with good people ... the right people.”



This is the backyard of your dreams; you'd be hard-pressed not to find whatever you're looking for in this yard. Cool down in the pool or warm up in the hot tub. Entertain in the outdoor kitchen, and enjoy the fireplace. Send the kids to hang by the fire pit. Everyone can reconvene later by the outdoor movie theater. This is a vacation paradise, and you needn't even leave the yard. Of course, if so inclined, there is private access to the private beach. "This was one of my favorite jobs," Jason said.



PHOTOGRAPHY: DAMIANOS PHOTOGRAPHY



The guest house. Jason describes the guesthouse build as an afterthought. "The survey team told us that given the size of the property, we could build a detached guesthouse." Then, why not? The 1200-square feet, two bedroom house offers a kitchen, living space, loft and laundry. It's ideal for in-laws and favorite guests.



PHOTOGRAPHY: DAMIANOS PHOTOGRAPHY



The guesthouse features an outdoor shower and overlooks the pool.

PHOTOGRAPHY: DAMIANOS PHOTOGRAPHY



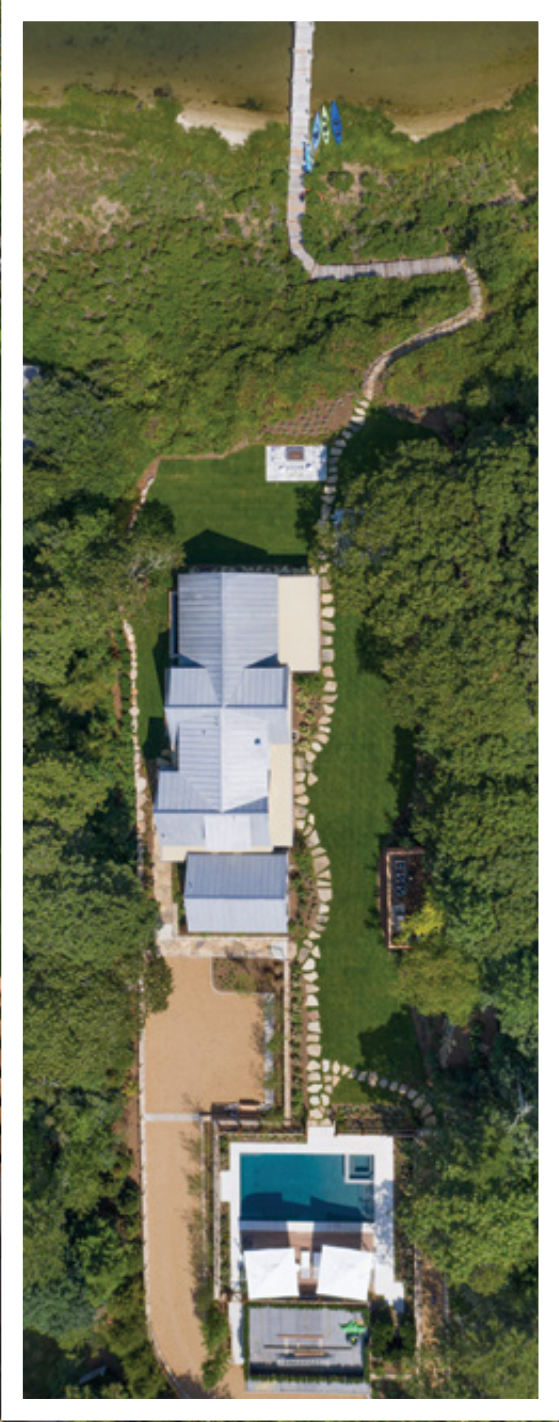
*“We have renovated and built many homes over the years, dealing with numerous builders and contractors, and can honestly say that the experience with Jason and Speedwagon has been the easiest and most enjoyable. The finished project exceeded our expectations and we couldn’t be happier with our new home. Jason is of the highest character and integrity, and working with him has truly been a pleasure.”*

—DON SULLIVAN



**PROJECT:** Martha's Vineyard  
**BUILDER:** Speedwagon Partners, LLC  
**ARCHITECT:** Sullivan + Associates Architects  
**LANDSCAPE ARCHITECT:** Timothy Lee Landscape Design  
Jason said of this build, "Fun project, beautiful house, great client. It didn't hurt that our view was of Edgartown Harbor either!" This build spanned 18 months and was logistically tougher than the others given the remote location. Still, 90% of the Boston Speedwagon team relocated to the island for the project duration. Finishing out the crew were some outstanding MV contractors, including Caleb from Contemporary Landscapes. "Foreman Glen Sargent did a spectacular job all around and made his mark on the Vineyard."

PHOTOGRAPHY: DAMIANOS PHOTOGRAPHY



An aerial view of the home built by Speedwagon Partners, LLC, on Martha's Vineyard



PHOTOGRAPHY: DAMIANOS PHOTOGRAPHY

It's evident that Jason has fostered loyal followings among colleagues and clientele alike. He resides with his family in a Bedford subdivision he designed some 10 years ago. Every neighbor is also a client. Can there be a better example of accountability? Quite simply, Jason Brickman understands that building is dependent on so much more than material and skilled labor. The human experience is intrinsic to the process and cannot be underestimated. Though homes are meant to shelter and to provide respite (made abundantly clear in current circumstances), they are also gathering places meant to welcome and entertain. Having come to homebuilding by way of the fitness and hospitality industry, Jason understands well what is involved in creating hospitable and welcoming spaces. He has said it was from his father-in-law (a residential builder himself) who inspired Jason to enter into the homebuild industry. So it was. He launched Speedwagon Partners, LLC, in 2006.





Enjoy the outdoor fireplace over the Edgartown Harbor anytime of day or evening.



The garage features shrubbery on the roof.



PHOTOGRAPHY: DAMIANOS PHOTOGRAPHY

**PROJECT:** Burlington, MA  
**BUILDER:** Speedwagon Partners, LLC  
**ARCHITECT:** DNA Architecture  
**Design Team:** Tier Designs

**LANDSCAPE ARCHITECT:** Eric Bednarek

This 13,000-square-foot custom home build was first imagined by homeowners Chip and Amanda Grueter. With their primary residence in Myrtle Beach, the Grueters wanted a local home near established family. Preparing the build site first involved blasting a great deal of ledge.

“Working with Speedwagon Partners was an amazing experience. What Jason and his team bring to the table is decades of experience and knowledge while providing a wealth of options and guidance. We look forward to working with them on a future project.” — Chip and Amanda Grueter



PHOTOGRAPHY: DIANE ANTON PHOTOGRAPHY





PHOTOGRAPHY: DAMIANOS PHOTOGRAPHY

Wanting to create ceiling height in the single-story master bath, Speedwagon decided on the addition of an oversized skylight. The bathroom floors provide radiant heat.

---

---

The counterargument to Speedwagon's lack of longevity, is without a doubt, the firm's ambitious construction agenda. At any given time, in some of Boston's premier suburbs, Speedwagon Partners is engaged in six to 12 new projects, aggressively surpassing the ventures of other build firms. Each custom build home likely spans nine to 18 months, depending on scope. Elaborate builds like those for which Speedwagon has become synonymous demand acute attention to the minutia and cannot be completed in haste. Thoughtful planning and project deliberation are critical elements in each Speedwagon build and facilitate Jason's inspired ability to forecast the team's enterprising schedule.

Jason noted that it is precisely that large volume that affords his team greater pricing margins from their suppliers, a cost savings that he is pleased and eager to pass back to the client. Small-scaled is not part of the Speedwagon vernacular. Jason's team undertakes to deliver every desired amenity but within a strict budget framework.



Floating Vanity



To achieve the homeowners' vision for the home theater on the lower level, Jason's team brought in an audio/visual architect who collaborated with the Erskine Group to design and install the high-end theater system.



The garage is a misnomer; it's more appropriately labeled a showroom for the client's extensive car collection. "He wanted a dedicated space for all of his toys," detailed Jason.

PHOTOGRAPHY: DAMIANOS PHOTOGRAPHY

*“Jason and Speedwagon Partners exhibited the utmost in seamless communication, patience and quality workmanship. Jason is an absolute pleasure to work with, as are all of his subs. We love our new home, which was designed to meet all of our needs and preferences.”*

—YOLANDA TAYLOR



PROJECT: Lexington, MA  
BUILDER: Speedwagon Partners, LLC  
ARCHITECT: Colin Smith Architecture  
Interior Design: Atsu Gunther Design  
LANDSCAPE ARCHITECT: Eric Bednarek

The main foyer of this shingle, Craftsman-style house features a turret. “Colin Smith, of Colin Smith Architecture, provided us the template for the turret and we built it on-site, on the ground. We then lifted it with a crane and into its new home,” explained Jason.

Clients Jeff and Michelle Knight said this of their experience: “Building our home with Speedwagon Partners was an excellent experience. They worked within our budget and time frame and gave valuable direction and suggestions, from planning through completion. We would build with Speedwagon Partners again, without any hesitation or concerns, and have recommended them to friends who have also been satisfied.”

---

---

*Thanks to Jason Brickman for building a beautifully appointed house. The care and attention to detail that Jason puts into his work is outstanding. I enjoy my home every day!*

—CARON BLEICH



The deep coffered ceilings in the family room contribute to the modern feel of the house.



The 26-foot ceiling of reclaimed beams in the kitchen gives a rustic feel. The kitchen is adjacent to the sunroom and features a sliding barn door.



The central feature of the home is undoubtedly the floating steel staircase with steel rails and posts painted black and steel cables. Speedwagon Partners' in-house carpenters built the treads from walnut.









A great backyard for entertaining



Speedwagon was asked to build a separate indoor sport complex to house an indoor swimming pool and basketball court. Colin Smith designed the architectural plans.



PHOTOGRAPHY: DAMIANOS PHOTOGRAPHY

*“Jason has an amazing eye, a flexible, client-oriented approach, and the follow-through on results a homeowner would dream about.*

*We couldn’t be happier!”*

—BEN AND ANNA SOLKY



**PROJECT:** Lexington, MA  
**BUILDER:** Speedwagon Partners, LLC  
**ARCHITECT:** DNA Architecture  
**LANDSCAPE ARCHITECT:** Eric Bednarek  
Architectural details are found in every home built by Speedwagon Partners, LLC.



That budgeting precision, paired with the expert craftsmanship and cutting-edge technology revealed in every Speedwagon home is why most of the firm’s spec houses sell before they even go to market. At that juncture, the buyer joins the team of collaborators in a consolidated effort to bring their vision to life. This is where Interior Designer Jessica Betts shines. Creating an open dialogue with



PHOTOGRAPHY: DAMIANOS PHOTOGRAPHY



The sunroom provides a nice sitting room with the homeowners' plants.

the new homeowners, she seeks to interpret exactly how they intend to use their new space and what they might envision for it.

Says Brickman, "Our clientele recognizes that we're passionate about our work, and that's reflected in all we do. At the end of the day, if you can maintain long-lasting relationships (years after the hand over), you're lucky." Indeed. ■





The bridal staircase on display in this shingle-style custom home was built by Speedwagon master carpenters. That same team built the custom screen panels and custom beams displayed in the three-season room.

PHOTOGRAPHY: DAMIANOS PHOTOGRAPHY



PHOTOGRAPHY: DAMIANOS PHOTOGRAPHY

Looking out into the yard, one can see the pool and nearby pool house. There is a pool bathroom and outdoor shower. The home's insides have been recreated outdoors—now boasting an exterior kitchen and even an outdoor movie theater.





**PROJECT:** Lexington, MA  
**BUILDER:** Speedwagon, Partners, LLC  
**ARCHITECT:** DNA Architecture  
**LANDSCAPE ARCHITECT:** Eric Bednarek  
This beautiful custom build was the brainchild of clients Lindsey and Costa. From day one, Lindsey had a clear vision for the build and worked closely with Speedwagon designer Jessica Betts as well as the client's own designer.



The back of the house has a big patio and plenty of space for entertaining and for the children.

PHOTOGRAPHY: DAMIANOS PHOTOGRAPHY





The bathroom features a fireplace.



Custom built closet by Speedwagon Partners, LLC

PHOTOGRAPHY: DAMIANOS PHOTOGRAPHY

PROJECT: Chatham, MA  
 BUILDER: Speedwagon Partners, LLC  
 Home Planning Designer: Bernadette Macleod, Ryder & Wilcox  
 LANDSCAPE ARCHITECT: Eric Bednarek  
 This home boasts beautiful rooftop ocean views. The team designed a fabulous patio and three-season porch.



*“Building a custom home to perfectly suit your family and lifestyle is an exciting experience but can also be dauntingly overwhelming. Especially when you’re making decisions from nearly 700 miles away! Yet, somehow, Jason Brickman makes it easy. With an eye for detail and a wealth of building experience, Jason envisions more than what is on the blueprints. He sees all that a house can be, suggesting architectural elements we never considered and taking our Chatham abode to the next level. We love it.”*

—PEGGY FINNEGAN AND MIKE DONNELLY



PHOTOGRAPHY: DAMIANOS PHOTOGRAPHY



PHOTOGRAPHY: DAMIANOS PHOTOGRAPHY



BUILDER: Speedwagon Partners, LLC, Chatham, MA

PHOTOGRAPHY: ERIC BEDNAREK



Speedwagon Partners, LLC team: Tommy Busa (Site Supervisor), Charlie Gentile (GC), Dustin Nolan (In-House Architect), Jason Brickman (Principal), Glen Sargent (GC), Dennis Doucette (Master Carpenter).

PHOTOGRAPHY: DAMIANOS PHOTOGRAPHY

*For more information, see our website, [speedwagonpartners.com](http://speedwagonpartners.com).*